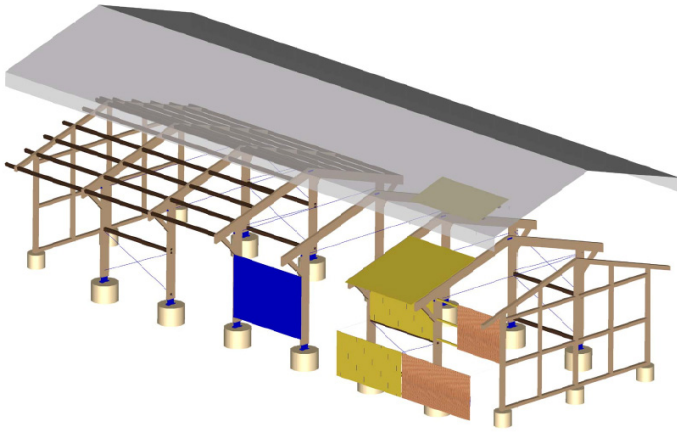


## Wooden hall system



### Characteristics

- easy assembling by CNC - trimming
- applicable for hall with span length from 10 to 15 m
- clear room height of 6.50 m (molded depth 5.25 m)
- length variable sum able (modular concept)
- large roof overhang 1.50 m
- easy assembling of all machine-made parts (plug-in system)
- no extensive foundation required
- column distance 4 to 6 m
- film roof made of long-lasting polyester fiber or heat insulating sandwich panel deliverable

