

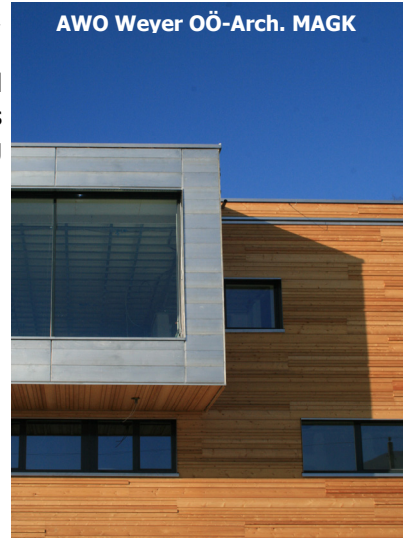
Facade - elements

HNT-facade elements characterized by **high dimensional stability**, **lowest cost** and **highest precision assembly by pre-fabrication**. Through use this large elements eliminates the usual screwing of individual profiles. **HNT-Fassaden** are quality controlled by delamination tests according to EN 391. Industrially applied, durable coatings against graying or contamination are possible.

Advantages:

- highest precision by industrially pre-fabricated elements
- time- and cost-saving assembly of elements
- no single board screwing because of element assembling
- minimized amount of stainless steel screws
- expensive windfoil may be omitted
- high dimensional stability because of cross laminated layer structure
- two types (Typ 3 & 4) and two qualities of surface for individual applications

AWO Weyer OÖ-Arch. MAGK



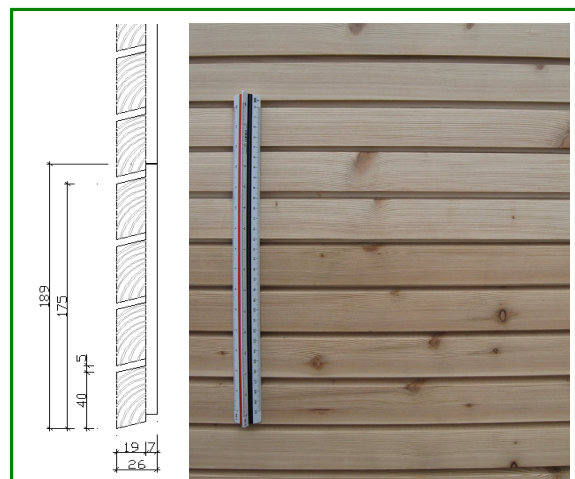
The facade elements were examined by Holzforschung Austria / Vienna.

TYPE 3



HNT-facade element 40 ship lap larch on layer made of spruce (Qualität AB), glued waterproof.
Format: 31 x 189 x 3970 mm (calculated measurement: 181 mm) (picture: quality "Select")

TYPE 4



HNT-facade element 40 rhombus larch auf Fichtenunterlage (Qualität AB), glued waterproof.
Format: 26 x 189 x 3970 mm (calculated measurement: 175 mm)



Residential Park „The Lake“ GB

facade-elements – description of quality

HNT-facade elements are produced out of larch in two qualities:

- **SELECT** (corresponds VEH A)
- **STRUKTUR** (corresponds VEH B)

HNT is recommended for all free-weathered facades sufficient constructive wood protection.