

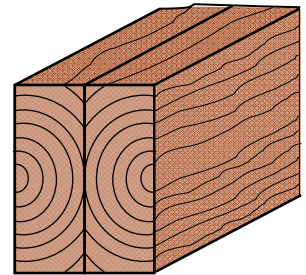
Construction Timber in Larch

glulam or glue laminated solid timber

planned and charging cross section		quality	package unit
width [mm]	hight [mm]	B	168 pc./pac.
50	80		2,67 m ³ /pac

package unit eaquales with one half-package

Larch



**glued laminated
solid timber**

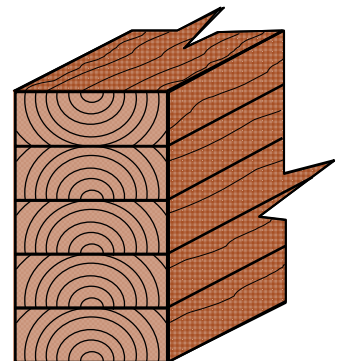


glulam (all 4 sides are planned)

planned and charging cross section		quality	package unit
width [mm]	hight [mm]	B	168 pc./pac.
60	100		110 pc. 2,644 m ³
90	90		72 pc. 2,315 m ³
100	100		66 pc. 2,620 m ³

package unit eaquales with one half-package

Larch



glulam

other dimensions or cross sections on request

KD is about 14%

Bonding with MUF-Adhesives

surface: 4-sides planed, chamfered edges

thickness of lamellas: standard 25 mm (partially also thinner lamellas are used)

no strength class

Length: standard: 3,970 m